



Hewer Parade, Telford, TF4

£1,095 Per Month

\*One Month Rent Free and £500 Voucher\*

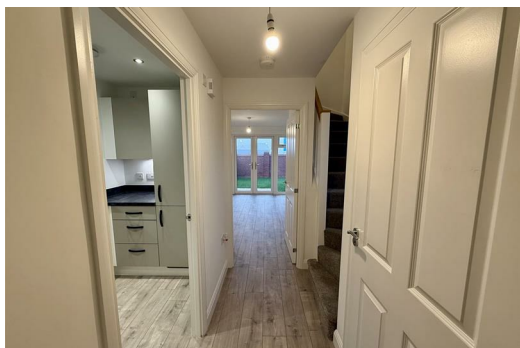
\*Deposit Free Option Also Available\*

Welcome to Scarlet View a countryside charm meets modern convenience in the heart of Telford. Part of the picturesque Lawley Village, Scarlet View offers a range of 2, 3 and 4-bedroom homes to rent in a well-connected community, surrounded by the beauty of the Shropshire countryside.

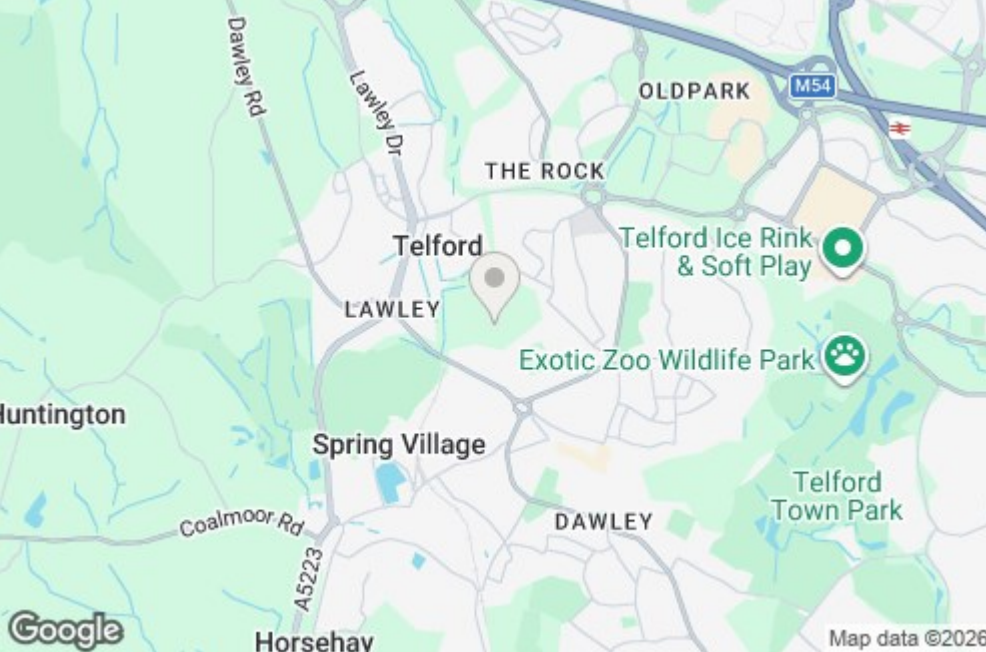
For commuters, Scarlet View is ideally located. The nearby M54 links quickly to the M6 and A5, and Wellington train station offers direct routes to the West Midlands, London and the Welsh coast. Whether you're travelling for work or weekend plans, getting around is simple.

Telford was heavily developed in the 1970s and was built with all the amenities needed for modern living. Against the backdrop of the beautiful Shropshire Hills, a new home here allows you to benefit from easy access to nearby cities. A Persimmon home means you're ideally placed to benefit from country and city living.

Telford is situated just to the north of the Shropshire Hills Area of Outstanding Natural Beauty and within easy reach of the cities of Wolverhampton and Birmingham. As a modern town, it has all the infrastructure and amenities you could need.



20 Sough Drive, Telford, TF4 2UU



Energy Efficiency Rating		Environmental Impact (CO <sub>2</sub> ) Rating	
Current	Potential	Current	Potential
91	91	A	A
81-90	81-90	B	B
71-80	71-80	C	C
61-70	61-70	D	D
51-60	51-60	E	E
41-50	41-50	F	F
31-40	31-40	G	G